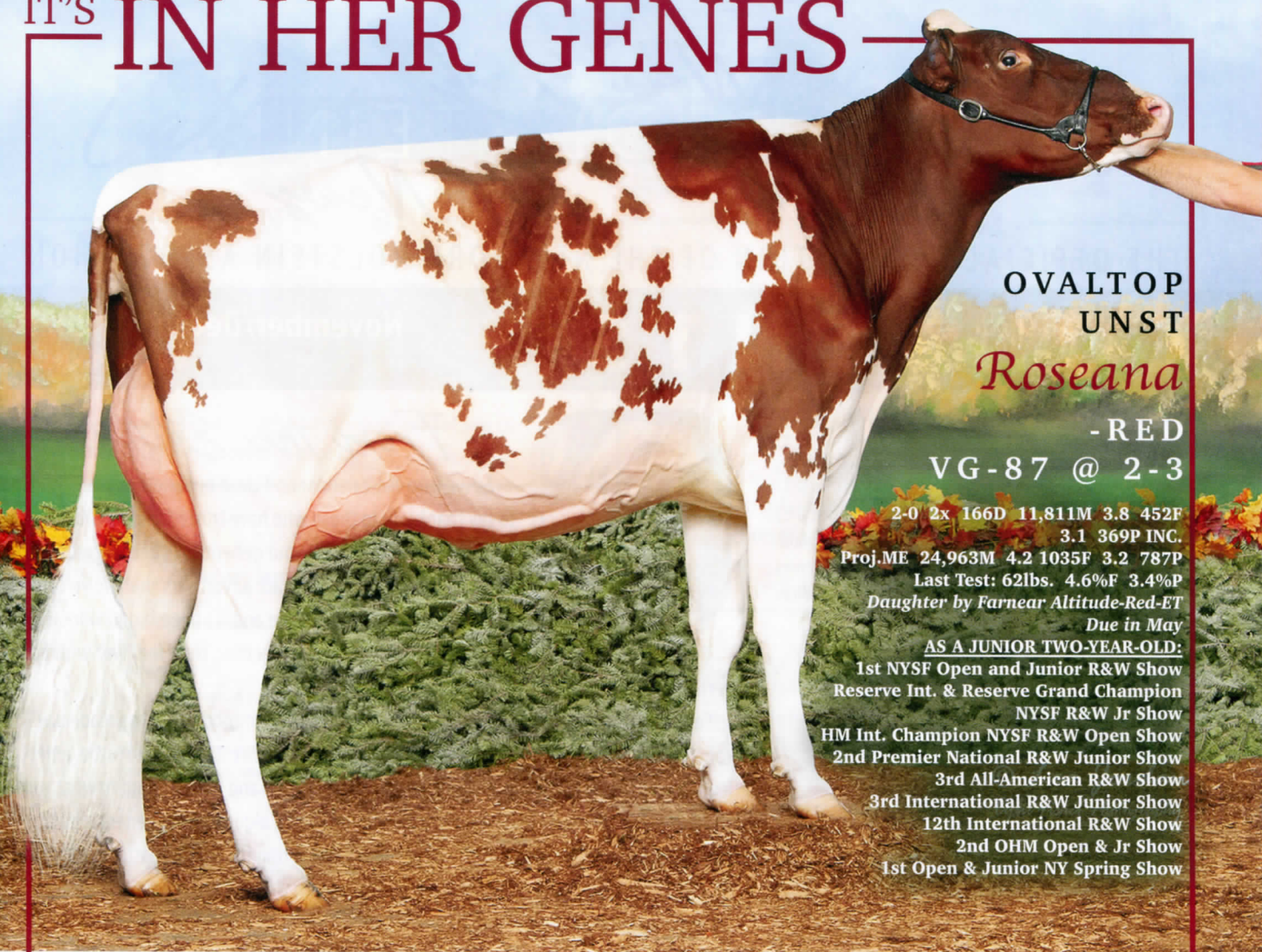


IT'S IN HER GENES



**OVALTOP
UNST
*Roseana***

**- RED
VG-87 @ 2-3**

2-0 2x 166D 11,811M 3.8 452F
3.1 369P INC.
Proj. ME 24,963M 4.2 1035F 3.2 787P
Last Test: 62lbs. 4.6%F 3.4%P
Daughter by Farnear Altitude-Red-ET

Due in May
AS A JUNIOR TWO-YEAR-OLD:
1st NYSF Open and Junior R&W Show
Reserve Int. & Reserve Grand Champion
NYSF R&W Jr Show
HM Int. Champion NYSF R&W Open Show
2nd Premier National R&W Junior Show
3rd All-American R&W Show
3rd International R&W Junior Show
12th International R&W Show
2nd OHM Open & Jr Show
1st Open & Junior NY Spring Show

**Dam: OVALTOP RLTY *Roselea* - RED
VG-87 EX-MS**



2-2 2x 330D 23,015M 4.1 936F 3.1 712P
3-2 2x 358D 28,167M 4.1 1142F 3.2 902P
4-4 2x 307D 27,829M 5.2 1455F 3.1 866P
Yearling daughter by Warrior • Due in December



NYS Master Breeder Herd
29-Year PBR Herd
BAA: 110.4 18 EX 54 VG 7GP
DHIR Avg. 26,894 990 819

Howard & Ginny 315.858.2882
Doug 315.717.2612
Mike & Monica 315.717.8478
www.ovaltopholsteins.com



Howard W. Wolfe & Family
436 Chyle Road
Richfield Springs, NY 13439
ovaltop2@gmail.com