

Your Chance - Your Choice

To Own a Member of the Famous Roxy Cow Family

Selling April 13 in the NY Spring Sale, Syracuse, NY



C GLENRIDGE CITATION ROXY (4E-97-GMD)
10-01 365 25,280 4.2 1061

C HANOVER HILL STAR ROXY-ET (2E-92 GMD-DOM)
4-05 365 31,780 4.4 1394 3.3 1054

HANOVER-HILL-R MI ROCHELLE *RC (EX-93)
5-10 365 24,980 4.6 1154 3.4 840

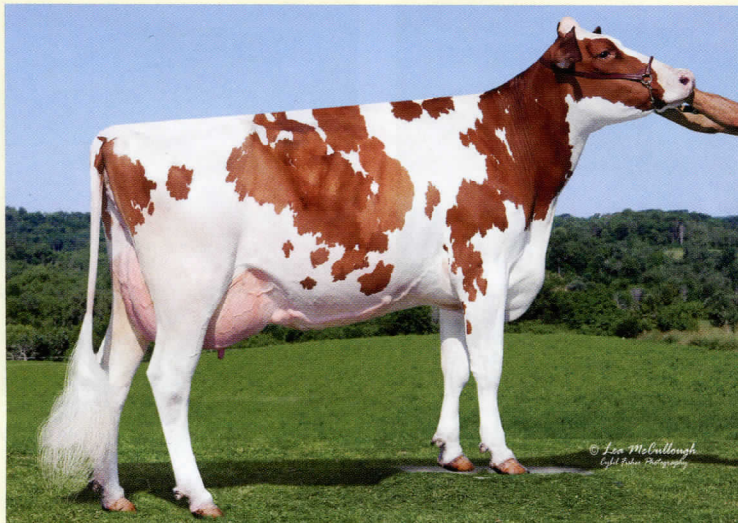
RIDGEDALE RHODA-RED-ET (EX-91)
3-09 305 28,900 4.8 1373 3.1 883

MIL-R-MOR ROXETTE (EX-90 GMD-DOM)
7-01 365 24,530 4.7 1153

HANOVERHILL-R RHONDA-TW (4E-94 GMD-DOM)
6-02 365 38,820 4.0 1562 3.1 1215

RIDGEDALE-T REHEMA-RED-ET (2E-93)
6-02 365 26,100 4.1 1065 3.1 799

The Next Generation



JON-LU ADVENT RONA-RED-ET (EX-90, EX-MS @ 3y)

2-02 2x 365 29,060 4.3 1239 3.1 914

3-08 2x 150 16,483 4.2 686 3.1 508 (Inc.)

Last test milking 101 lbs. 4.8%^f 3.3%^p



Selling a first choice female from Rona x Colt-P-Red from transfers due in October or December '13! Great opportunity to own a R&W polled show heifer backed by 9 generations of super Excellent dams all pictured above!

**Type - Production - Pedigree
- all in one package!**

Also selling a fancy summer yearling heifer by Sid-ET out of a Goldwyn 2-yr-old from the Pinehurst Rapture family backed by 7 generations EX dams (4 GMDs). Consigned by Ridgedale Farm & Ovaltop Holsteins.



Howard & Ginny 315.858.2882
Doug 315.858.9058
Mike & Monica 315.858.1460
Fax 315.858.0842
Email: ovaltop@ntcnet.com

Howard W. Wolfe & Family
436 Chyle Road - Richfield Springs, NY 13439
www.ovaltopholsteins.com

NYS Master Breeder Herd
24 Year PBR Herd
BAA - 110.4% 29 EX 38 VG 11 GP
DHIR Avg. 26,318 3.7 970 3.0 800