

# O-H-M Sale Bound

Saturday, October 15th  
Roedale Farm, Richfield Springs, NY



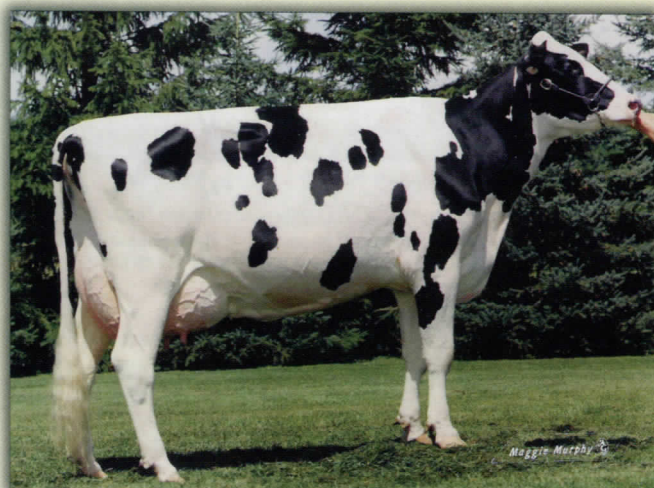
*Selling Gr-Daughters of these Special "J" Family Members*



**OVALTOP RED-MARKER JUSTINE (3E-94)**

6-07 2x 365 31,770 4.0 1273 3.1 989  
Lifetime: 165,890 4.3 7074 3.2 5354

*Selling a fresh first calf heifer sired by Fever from  
a young Durham dam with 4.2% test.*



**OVALTOP CHARLES JOYFUL (3E-93-DOM)**

6-09 2x 365 33,520 4.2 1423 3.5 1158  
Lifetime: 188,930 4.3 8048 3.4 6418

*Selling a second calf Phoenix fresh in September  
with 2-02 2x 365 21,663 3.9 843 3.2 687.  
Dam GP-84 Spirit with over 1000 fat records.*

## *Selling from the "N" Family*

**OVALTOP GIBSON NITASHA (2E-90)**

6-09 2x 365 38,920 3.6 1393 2.9 1127  
Lifetime: 175,440 3.6 6255 2.9 5084

*Selling a Dundee first calf gr-daughter  
of Nitasha fresh in August out of a VG dam  
with 3-04 2x 27,270 3.9 1074 3.1 843.*



Howard W. Wolfe & Family  
436 Chyle Road - Richfield Springs, NY 13439  
www.ovaltopholsteins.com

Howard & Ginny 315.858.2882  
Doug 315.858.9058  
Mike & Monica 315.858.1460  
Email: ovaltop@gmail.com

NYS Master Breeder Herd  
26 Year PBR Herd  
BAA: 110.4 22 EX 48 VG 5 GP  
DHIR Avg. 26,168 3.7 979 3.0 791